

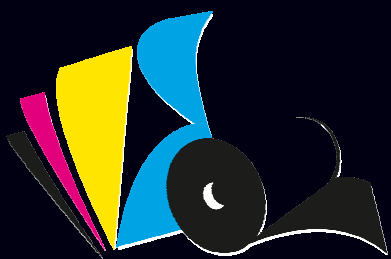
Repro

Built to perform



MUTOH

GRANDE FORMATO



Repro



Built to perform



MUTOH

GRANDE FORMATO

BASE ACQUA

DrafStation™

DrafStation RJ-900XG



High quality dye sublimation printer

The compact DrafStation RJ-900XG (1080 mm - 42.51") is ideal for every day sublimation printing. The printer is fit for both startup and established businesses wanting to extend their product portfolio.

You don't need to be an expert to run the DrafStation RJ-900XG printer, as it is very easy to operate and maintain. Competitively priced, RJ-900XG delivers consistent quality for volume production runs as well as short print runs. Continuous printing is made possible by the optional motorised torque-controlled take-up system.

The RJ-900XG model features a variable drop print head with 8 rows of 180 nozzles, allowing output resolutions between 360 x 360 dpi and 2880 x 2880 dpi.

Product Highlights

- 42" (1080 mm) attractively priced printer
- Piezo variable drop inkjet head (CMYK)
- Worry-free water based inks – free from VOCs
- Space saver design – safe & easy to use

Application Possibilities

Mutoh's DrafStation RJ-900XG prints on typical > 95 g/m² dye sublimation transfer papers, making transfer on a wide range of flexible and rigid polyester materials possible.

Explore new revenue opportunities such as high quality in-store textile decoration and displays, textile banners, pop-ups, sportswear, personalised home decoration, gadgets, shirts and many more.



MUTOH

Mutoh Belgium - www.mutoh.eu / Mutoh Deutschland - www.mutoh.de
Mutoh North Europe - www.mutohnorth.eu

DrafStation™

DrafStation RJ-900XG



42" Dye Sublimation Printer

SPECIFICATIONS

Technical Key Specifications

Print Technology	Drop-on-demand Micro Piezo Inkjet Technology
Print Head	1
Nozzle Configuration	180 nozzles x 8 lines
Drop Mass Range (pl)	3.4 to 49.5
Head Heights (mm)	Low : 1.2 / High : 2.0

Media Specifications

Max. Media Width	1080 mm (42,51")
Max. Print Width	1074 mm (42,28")
Max. Media Thickness	0,3 mm / 1,3 mm *

* : Max. media thickness is specified per head height

Media Measurements *	Ø 150 mm / 2" / 19 kg (3" adaptors optional)
----------------------	--

* : Standard non-motorised roll-off system / motorised take-up system optional

Ink Specifications

Ink Type	Dye Sublimation
Ink Volume	1000 ml
Ink Colours	CMYK
Ink Consumption *	8,5 ml / m ²

* : Average ink consumption graphics at @ 720 dpi - coverage of 67 %

UV durability	3 to 6 months outdoor
---------------	-----------------------

Light fastness - ISO 105-B02(*)	C (5-6)	M (6-7)	Y (6-7)	K (6)
Washing fastness - ISO 105-C02(*)	C (4-5)	M (4-5)	Y (4-5)	K (4-5)
Perspiration fastness - ISO 105-E02(*)	C (4-5)	M (5)	Y (4-5)	K (4-5)

(*) Score Ranges (min-max): Light 1-8 Washing 1-5 Perspiration 1-5

Performance

Resolutions	360, 540, 720, 1440 & 2880 dpi
Production Speed Range	2 m ² /h – 18.5 m ² /h
Maximum Speed	39.6 m ² /h

Power Consumption

During Printing / Cleaning	100 W
In Stand-by	35 W
Power Supply	AC 100-120 V / AC 200-240 - 60/50 Hz

Recommended Working Environment

Temperature	20 °C - 28 °C with Δt: max. 2 °C/h
Humidity	40 % - 60 % (no condensation) with ΔRH: max. 5 % RH/h

Machine Measurements

Width x Depth x Height	1772 x 504 x 983 mm
Weight	75.2 kg

Distributed by:



REPRO s.r.l.

Via C. Battisti, 41/43
35010 LIMENA (PD)
tel. 049 88 40 272
fax. 049 88 40 278
<http://www.reproweb.it>

ValueJet

ValueJet VJ-1624W



Professional Dye Sublimation Printer

The compact ValueJet 1624W (1625 mm – 64") is ideally suited for your daily sublimation needs. The printer will deliver speeds ranging from 9 to 38 m²/h. The machine is fit for both startup and established businesses wanting to extend their product portfolio.

You don't need to be an expert to run the VJ-1624W printer, as it is very easy to operate and maintain. Competitively priced, ValueJet 1624W will deliver constant quality for volume production runs as well as short print runs.

The VJ-1624W model features a latest generation variable drop 8 channel print head featuring 8 rows of 180 nozzles, allowing output resolutions between 360 x 720 dpi and 1440 x 1440 dpi.

Product Highlights

- Transfer sublimation printing up to 1625 mm (63.97")
- Latest generation 1440 nozzle piezo head
- Typical production speeds between 14 & 27.5 m²/h
- Mutoh water-based disperse dye inks
- Ideal for production of soft signage, sportswear, gadgets, ...
- Environmentally friendly printing - high level of operator safety

Application Possibilities

Explore new revenue opportunities such as high quality in-store textile decoration and displays, textile banners, pop-ups, sportswear, personalised home decoration, gadgets, shirts and many more.



MUTOH

Mutoh Belgium nv - T: +32 59 56 14 00 / E: mutoh@mutoh.be / W: www.mutoh.eu

ValueJet

ValueJet VJ-1624W



Dye Sublimation Printer

SPECIFICATIONS

Technical Key Specifications

Print Technology	Drop-on-demand Micro Piezo Inkjet Technology
Print Head	1
Nozzle Configuration	180 nozzles x 8 lines - 360 nozzles per colour
Drop Mass Range (pl)	3.3 to 34.1
Head Heights (mm)	Low : 1.5 / Middle: 2.5 / High : 4.0

Media Specifications

Max. Media Width	1625 mm (63,97")
Max. Print Width	1615 mm (63,58")
Max. Media Thickness	0.3 / 1.3 / 2.8 mm *

* : Max. media thickness is specified per head height

Media Measurements *	Ø 150 mm / 2" & 3" / 30 kg
----------------------	----------------------------

* : Standard non-motorised roll-off system

Ink Specifications

Ink Type	Disperse Dye Sublimation
Ink Volume	1000 ml
Ink Colours	CMYK
Ink Consumption	15 ml / m ²
UV durability	3 to 6 months outdoor

Performance

High Quality (540 x 720)	9.0 m ² /h
Quality (720 x 720)	14.0 m ² /h
Production (360 x 720)	20.5 m ² /h
Speed Production (360 x 360)	27.5 m ² /h
Billboard (360 x 360)	38.0 m ² /h

Power Consumption

During Printing	210 W
In Stand-by	38 W
Power Supply	AC 100-120 V / AC 200-240 - 60/50 Hz

Recommended Working Environment

Temperature	20 °C - 30 °C with Δt: max. 2 °C/h
Humidity	40 % - 60 % (no condensation) with ΔRH: max. 5 % RH/h

Machine Measurements

Width x Depth x Height	2698 x 885 x 1261 mm
Weight	160 kg

Distributed by:



REPRO s.r.l.

Via C. Battisti, 41/43
35010 LIMENA (PD)
tel. 049 88 40 272
fax. 049 88 40 278
<http://www.reproweb.it>

MUTOH

ValueJet

VJ-1638

Mutoh ValueJet 1638

High Speed Sign Printer



Staggered dual head setup with latest generation 1440 nozzle piezo heads

Ideal for both speed production & top quality print work

Super high resolution prints at 20 m²/h (720 x 1080 dpi)

Production speeds including 29 and 36 m²/h @ 720 x 720 dpi

Top speeds up to 48 m²/h

Durable prints on coated & uncoated substrates up to 1625 mm (63.97")

Suitable for indoor & outdoor graphics - exterior durability up to 3 years



ValueJet 1638

Maximum Media / Print Width / Thickness / Roll Diameter

Max. Media Width : 1625 mm (63.97") / Max. Print Width : 1615 mm (63.58")

Media Thickness : Head low: 0.3 mm / Head middle: 1.3 mm / Head high: 2.8 mm

Roll Diameter: max. Ø 150 mm

Application Possibilities

Targeted at the sign & display market, the Mutoh ValueJet 1638 high speed, high quality printer will address the needs of sign makers & commercial printers focusing on high volume production of outdoor prints. The VJ-1638 is suited for the production of long-term outdoor posters, signs and banners, backlit signage, POS displays, vehicle graphics as well as high quality durable prints for indoor use.

Inkjet Technology

Staggered dual head setup with latest generation 1440 nozzle piezo heads (360 nozzles / head - two 180 nozzle rows per colour) – Drop mass range: 3.6 – 35 pl

Drop-on-demand micro piezo inkjet heads with dynamic variable dot imaging technology.

Mutoh's award-winning Intelligent Interweaving print technology (i²) inside.

Print Resolutions / Speed Levels

540 x 720, 720 x 720, 720 x 1080, 1440 x 720 & 1440 x 1440 dpi

High quality speed up to 20 m²/h (720 x 1080 dpi)

Typical production speed up to 36 m²/h (720 x 720 dpi)

Top speed up to 48 m²/h (360 x 720 dpi)

Media Flexibility

Prints directly onto a wide range of low-cost standard available uncoated PVC, banner and soft sign materials as well as coated substrates.

Three individually controlled heating elements below the print platen structure will tackle media pre-heating, ink fixation and drying of the prints.

2" and 3" media rolls. Different winding/unwinding systems available.

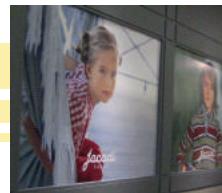
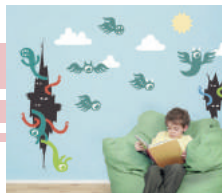
Automatic sheet-off after printing. Manual cutting possible in the dedicated cutting groove on the media guide.

Trustworthy Ink

The Eco Ultra inks from Mutoh are based on non-aggressive solvents. As they do not spread any harmful VOCs in the working environment, there is no need for forced ventilation. Eco Ultra inks are Mutoh's third generation of eco inks featuring improved ink fixation, better drying, higher print speeds, and improved scratch resistance. The ValueJet VJ-1638 accepts 440 and 220 ml Eco Ultra ink cassettes.

Prints made with Mutoh's Eco Ultra inks are UV and water resistant for up to three years outdoors*.

* : For heavy-duty applications where mechanical stress is involved (floor & vehicle graphics), lamination is required. Stabilisation is required prior to lamination.



© Mutoh Belgium nv – March 2012. Specifications are subject to change without notice. The machine depicted on this brochure does not necessarily show a standard configuration. For further info, please contact your nearest Mutoh authorised reseller. All trademarks mentioned are property of their respective owners. Image in the printers courtesy of and copyrighted by Joris Lugtigheid www.jorislugtigheid.nl

MUTOH

MUTOH Belgium nv
E-mail: mutoh@mutoh.be
<http://www.mutoh.eu>

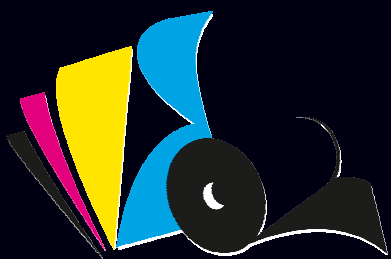
MUTOH Deutschland GmbH
E-mail: vertrieb@mutoh-gmbh.de
<http://www.mutoh.de>

MUTOH North Europe
E-mail: info@mutohnorth.eu
<http://www.mutohnorth.eu>

Distributed by:



REPRO s.r.l.
Via C. Battisti, 41/43
35010 LIMENA (PD)
tel. 049 88 40 272
fax. 049 88 40 278
<http://www.reproweb.it>



Repro



Built to perform



MUTOH

GRANDE FORMATO

ECO / MILD SOLVENT

ValueJet

ValueJet VJ-628



Compact 24" Wide Desktop Eco Ultra Printer

The VJ-628 is Mutoh's smallest sign & display printer offering a great potential to startup businesses, small sign makers, department stores and quick print providers. Offering a media width of 630 mm (24"), the compact, user-friendly & cost-effective ValueJet 628 has been developed for a wide array of applications ranging from in-store printing, commercial print, signage and print-to-cut applications.

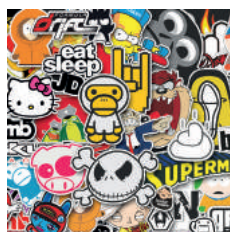
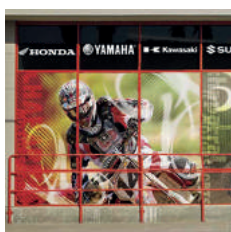
Equipped with a latest generation micro piezo print head, this compact 8 channel desktop printer delivers high quality prints for indoor & outdoor applications.

Product Highlights

- Powerful 8 channel desktop printer
- Latest generation piezo print head technology on board
- Impeccable print quality every time with Mutoh Intelligent Interweaving print technology (i²)
- Durable graphics with Mutoh Eco Ultra inks
- Production speed range from 3 to 12.5 m²/h

Application Possibilities

Designed for small-lot on demand production, the VJ-628 is suited for a wide variety of outdoor and indoor prints : long-term outdoor posters, stickers & labels, signs and banners, apparel decoration, backlit signage, POS displays, vehicle & window graphics, photo prints, fine art reproduction, etc..



MUTOH

Mutoh Belgium - www.mutoh.eu / Mutoh Deutschland - www.mutoh.de
Mutoh North Europe - www.mutohnorth.eu



ValueJet VJ-628



24" Sign & Display Printer

SPECIFICATIONS

Technical Key Specifications

Print Technology	Drop-on-demand Micro Piezo Inkjet Technology
Print Head	1 (8 colour channels)
Nozzle Configuration	180 nozzles x 8 lines
Drop Mass Range (pl)	3,5 to 35,2
Head Heights	Low: 1.2 mm / High: 2.5 mm

Media Specifications

Max. Media Width	630 mm (24,80")
Max. Print Width	620 mm (24,40")
Max. Media Thickness	0,3 / 1,3 mm *
*: Max. media thickness is specified per head height	
Media Measurements *	Ø 150 mm / 2" & 3" / 9 kg
*: Standard non-motorised roll-off system	
Media Drying System	3 heater zones: pre-heater, platen heater and after heater. Single control : off, 30-45 °C
Sheet Off Function	Automatic sheet off system integrated

Ink Specifications

Ink Type	Eco Ultra
Ink Volume	220 ml
Ink Colours	CMYK
Ink Consumption *	8 ml / m ²
*: Average ink consumption at @720 dpi - coverage of 67 %	
UV durability-without lamination	3 years outdoor *
*: For heavy duty applications where mechanical stress is involved, lamination is required. Stabilisation is required prior to lamination.	

Machine Measurements

Width x Depth x Height	1190 x 437,5 x 365,6 mm (Desktop) 1190 x 590 x 1165,6 mm (+ Optional stand)
Weight Desktop / Stand	31.8 kg / 40.5 kg

Performance

High Quality (720 x 1080)	3.0 m ² /h
Quality (720 x 720)	4.6 m ² /h
Quality Production (720 x 1080)	5.9 m ² /h
Production (720 x 720)	9.0 m ² /h
Speed Production (720 x 720)	12.5 m ² /h
Billboard (360 x 720)	16 m ² /h

* All speeds indicated for 4 colour setup. Full width.
Intelligent Interweaving active

Power Consumption

During Printing	500 Watt
In Stand-by	≤ 830 W
Power Supply	AC 100-120 V / AC 200-240 - 60/50 Hz - ≤ 6.5 A / ≤ 3.5 A

Recommended Working Environment

Temperature	20 °C - 32 °C with Δt: max. 2 °C/h
Humidity	40 % - 60 % (no condensation) with ΔRH: max. 5 % RH/h

Distributed by:



REPRO s.r.l.
Via C. Battisti, 41/43
35010 LIMENA (PD)
tel. 049 88 40 272
fax. 049 88 40 278
<http://www.reproweb.it>

MUTOH

ValueJet
1324 & 1624

High quality printers for durable graphics



Most powerful ValueJet Eco printers ever, featuring new head technology

Two models : ValueJet 1324 – 54" (1371 mm) & ValueJet 1624 – 64" (1625 mm)

Increased print speeds & improved print quality

Proven technology plus a new set of innovative comfort features

Impeccable print quality every time with Mutoh Intelligent Interweaving print technology (i²)



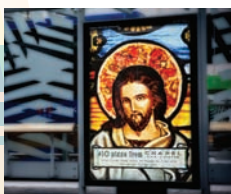
Money-making Flexibility !

Targeted at the sign and display market, Mutoh's second generation ValueJet 1324 & 1624 wide format printers are the fastest ValueJet Eco printers ever. The new members of the popular ValueJet lineup will appeal to established businesses as well as to starters. Incorporating the well-known & proven Mutoh ValueJet design features, these new printers have a revolutionary drop-on-demand 1440 nozzles print head on board. The new head delivers a stunning performance (up to 29 m²/h) as well as improved print quality at higher print speeds. Apart from new head technology, the newcomers also incorporate a set of innovative design features, such as an automatic sheet-off mechanism, a new easy access keyboard and a tiltable ink cassette holder. The new machines will deliver the highest level of user comfort and best-in-class print production efficiency available on the market.

The CMYK ValueJet 1324 (VJ-1324) & ValueJet 1624 (VJ-1624) printers are suited for the production of long term outdoor applications : full-colour posters, banners, backlit signage, POS displays, external notices for buildings, production plants and construction sites as well as adhesive signs and stickers. Apart from outdoor applications, the ValueJets are also an excellent choice for durable photo-realistic prints for indoor use.

Easy to install, operate and maintain, the machines utilise Mutoh Eco Ultra inks, making them suited for operation in any working environment. The ValueJets incorporate Mutoh's award-winning Intelligent Interweaving print technology (i²) offering predictable and repeatable output quality.

The new ValueJet 1324 & 1624 printers will deliver you money-making flexibility for many years to come !

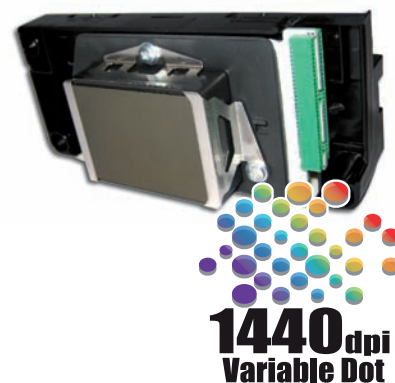


Revolutionary 1440 dpi Print Head on Board

A new variable drop piezo print head is at the heart of the VJ-1324 / 1624's stunning performance. This 1440-nozzle head comprises four colour sections. Each colour section has 360 nozzles, or two 180 nozzle rows per colour. Because all colour sections are united in one head, there is no need for time-consuming head-to-head calibration routines.

The print head is capable of producing ink drops ranging from 3.5 pl to 35 pl. Bottom line, it can produce a wider range of ink dots, which are moreover jetted at a much faster speed compared to other print heads on the market. The result is faster output speeds and moreover a much better print quality at higher output speeds.

The new print head offers five different print resolutions up to 1440 dpi, including a new 720 x 1080 dpi print mode, to produce top quality graphics with vibrant and crisp colours, flawless solid colours and unrivalled smooth gradations.



Stunning Performance

Top speed of the VJ-1624 amounts to 29 m²/h. For the VJ-1324, top speed is 27.9 m²/h. Five different resolutions can be addressed : 540 x 720 dpi, 720 x 720 dpi, 720 x 1080, 1440 x 720 dpi and 1440 x 1440 dpi. The new ValueJet 1324/1624 printers incorporate pre-defined print modes which enable the ValueJet operator to easily select the appropriate settings for the required speed / quality. Experienced users can also set up print mode parameters to their satisfaction.

The printers offer you a wide range of print modes and speeds. The table below lists the most popular ones with which impeccable printing quality can be obtained for the intended viewing distance.

ValueJet 1324

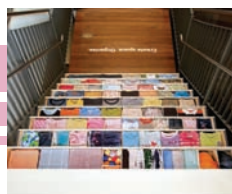
Print Mode (dpi)	Passes / Scans	Viewing distance	Print speed in m ² /h
Quality production - 720 x 720	8	Less than 1 m	5.9
Normal production - 720 x 1080	6	Between 1 m and 2 m	7.9
Speed production - 720 x 720	4	More than 2 m	11.8
Top Engine speed - 360 x 720	2	To be judged on individual basis	27.9

ValueJet 1624

Print Mode	Passes / Scans	Viewing distance	Print speed in m ² /h
Quality production - 720 x 720	8	Less than 1 m	7.5
Normal production - 720 x 1080	6	Between 1 m and 2 m	10
Speed production - 720 x 720	4	More than 2 m	14.5
Top Engine speed - 360 x 720	2	To be judged on individual basis	29

Optional Spectrophotometer

The new ValueJet printer models can be equipped with Mutoh's optional SpectroVue VM-10 spectrophotometer. Directly attachable to the print head carriage or shuttle of the printer, the VM-10 allows monitoring colour drift over time, from job-to-job or even within a large job. The VM-10 can also be used to build ICC colour profiles and linearization files, in combination with supporting software.



Intelligent Design Features for Extra User Comfort

The ValueJet 1324/1624 integrate a newly designed keyboard with easy & logical layout as well as an automatic cutting function to sheet off finished prints. The printers have special ink subtanks enabling the user to remove empty ink cassettes & load new ones during printing, without any interruption of the printing process. The ValueJet 1624 includes a tiltable ink cassette holder to save space & enable the use of different ink volumes. Both printers include Mutoh's well-known i² technology saving you time and trouble whilst producing outstanding results.



Eco Ultra Inks for Graphics Creating a Lasting Impression



The Eco Ultra inks from Mutoh are based on non-aggressive solvents. As they do not spread any harmful VOCs in the working environment, there is no need for forced ventilation.

Eco Ultra inks are Mutoh's third generation of eco inks featuring improved ink fixation, better drying, higher print speeds, and improved scratch resistance. The ValueJet 1324 printer accepts easy-to-use 220 ml ink cassettes, whereas the VJ-1624 accepts 440 and 220 ml Eco Ultra ink cassettes.

Prints made with Mutoh's Eco Ultra inks are UV and water resistant for up to three years outdoors*.

**: For heavy-duty applications where mechanical stress is involved (floor & vehicle graphics), lamination is required. Stabilisation is required prior to lamination.*

Wide Media Compatibility

The VJ-1324/1624 printers can handle 2" and 3" rolls. To cope with the higher print speeds and in view of drying efficiency, the machines incorporate a redesigned print platen structure with three individually controlled heating elements. The heating elements will tackle media pre-heating, ink fixation and drying of the prints. The ValueJet printer using Eco Ultra ink is ideally suited to deliver top quality images when printing directly onto a wide range of low-cost standard available uncoated PVC, banner and soft-sign materials as well as for coated substrates.



Ready for Volume Production

The standard ValueJet 1324 & 1624 printer incorporates a set of scroller supports mounted at the back of the machine. These supports enable non-motorised unwinding of media (2" or 3" core) up to a weight of 19 kg (VJ-1324) or 30 kg (VJ-1624).

For the ValueJet 1324, Mutoh offers an optional winder system enabling motorized roll up of finished prints up to 30 kg (T-Winder 30)

For roll-up of prints on the ValueJet 1624, two different optional unwinder/winder systems are available : the T-Winder 30 take-up unit for media rolls up to 30 kg and the Unwinder/Winder 100 system with tension mechanism for motorised unwinding/winding of media rolls up to 100 kg.





Maximize your Profit with Mutoh Intelligent Interweaving (i²) Print Technology

The new ValueJets incorporate Mutoh's award-winning Intelligent Interweaving (i²) print technology, enabling a drastic reduction or even total elimination of the typical

difficulties inherent to conventional digital inkjet printing, such as horizontal banding, step mismatch banding and the visible effects of missing or misfiring nozzles.

One of the biggest benefits of this proprietary Mutoh print technology is that it offers predictable and repeatable output quality, therefore bringing an unprecedented level of user comfort to the printer operator. ValueJet printer users will be able to print ideal quality images fit for purpose every time, in the shortest possible time.



Print & Cut

Print and cut simultaneously by running your ValueJet printer in tandem with a Mutoh multi-purpose Kona cutter.

The user-friendly Kona cutting plotter is ready to tackle all your contour cutting applications such as stickers, short-run decals, window signs and much more. Thanks to Mutoh's patented Epos-technology and a unique job recognition feature, contour cutting is performed with virtually no user intervention required. The Mutoh Kona cutter can also trim posters thanks to its integrated poster trim function.

Find more about Mutoh's Print & Cut solution @ www.mutoh.be.



Fast Return on Investment

Rapid return on investment is available to beginners as well as skilled operators. The combination of affordable pricing, ease of use with consistent high quality output, flexibility for switching quickly between different media types and low ink consumption (average 8 ml/m² on uncoated PVC) means the ValueJet printer will swiftly turn investment into profit.

Basic Specifications

	ValueJet 1324	ValueJet 1624
Technology	Drop-on-demand Micro Piezo Inkjet Technology Variable drop mass output between 3.5 pl and 35 pl	
Head / Nozzle Configuration	180 nozzles x 8 lines = 1440 nozzles / head	
Print Resolutions	540 x 720 dpi, 720 x 720 dpi, 720 x 1080 dpi (new!) 1440 x 720 dpi, 1440 x 1440 dpi	
Maximum Media Width	1371 mm (53.97")	1625 mm (63.97")
Maximum Print Width	1361 mm (53.58")	1615 mm (63.58")
Minimum Media Width	500 mm (19.68")	900 mm (35.43")
Media Thickness	up to 1.3 mm (2 head heights)	
Diameter	Ø 150 mm	
Core	2" & 3" compatible	
Weight	19 kg	30 kg
Ink Type	Eco Ultra	
Colours	CMYK	
Volume	220 ml cassettes	220 & 440 ml cassettes
Interface	Ethernet 10/100BASE-TX	
Command Language	MH-RTL (RTL-PASS)	
LCD display	Backlight LED – 1 line x 20 characters	
Operation Environment:	Temperature : 20 – 32 °C	
	Humidity : 40% - 60% RH (non-condensing)	
Heaters	Pre-heater : 30 – 50 °C	
	Platen heater : 30 – 50 °C	
	After-heater : 30 – 50 °C	
Power Supply:	AC 100-120 V / AC 200-240 V 60/50 Hz	
Power Consumption	During printing: 500 W	During printing: 600 W
	In stand-by mode: 65 W	In stand-by mode: 90 W
	During warming up: 1010 W	During warming up: 1500 W
Acoustic Levels Idle/Printing	62.4 / 67.7 dB	60.5 / 69.8 dB
Dimensions (HxWxD)	1218 x 1916 x 685 mm	1261 x 2698 x 885 mm
Weight	82.3 kg	160 kg

Mutoh Authorised Resellers

Mutoh products are distributed and supported by an extensive network of certified Mutoh authorized resellers extensively trained by Mutoh for sales and after-sales support. Mutoh authorised resellers will offer you further product information & insight, possible product configurations, product pricing and return on investment figures to meet your company's objectives. Contact your nearest Mutoh authorised reseller at www.mutoh.eu.

© Mutoh Belgium nv – September 2011. Specifications subject to change without notice. The machines depicted on this brochure do not necessarily show a standard configuration. For further info, contact your nearest Mutoh authorized reseller. All trademarks mentioned are property of their respective owners. Images in printers courtesy of and copyrighted by Peter Verplancke - www.fotografie-verplancke.be.

MUTOH

EMEA Headquarters
MUTOH Belgium nv
Tel.: 32-(0)59-56 14 00
Fax: 32-(0)59-80 71 17
E-mail: mutoh@mutoh.be
<http://www.mutoh.eu>
<http://www.mutoh.be>

Regional Sales Office
MUTOH Deutschland GmbH
Tel.: 49-211-385474-0
Fax: 49-211-385474-74
E-mail: vertrieb@mutoh-gmbh.de
<http://www.mutoh.de>

Distributed by:



REPRO s.r.l.
Via C. Battisti, 41/43
35010 LIMENA (PD)
tel. 049 88 40 272
fax. 049 88 40 278
<http://www.reproweb.it>



MUTOH

Creation, we make it happen ...

ValueJet 1614

Una stampante versatile ad alta risoluzione per grafica di lunga durata



- ✔ *Grafica di lunga durata su materiali pretrattati e non, di larghezza fino a 1625mm (63,97")*
- ✔ *Stampa manifesti a colori, banner, pannelli retroilluminati, espositori per punti vendita, volantini, insegne ed etichette*
- ✔ *Qualità impeccabile ad ogni stampa con la tecnologia Mutoh i²*
- ✔ *Rapido rientro dell'investimento grazie alle prestazioni versatili e al prezzo interessante*
- ✔ *Semplice da usare e compatta, con inchiostri ecologici per stampe senza problemi in ogni ambiente*
- ✔ *Velocità di stampa fino a 18 m²/h*





Larghezza massima del materiale / della stampa

Larghezza massima del materiale: 1625 mm (63,97") / Larghezza massima di stampa: 1615 mm (63,58")

Spessore del materiale: fino a 1mm (se il materiale non forma grinze e/o non ha fibre lunghe)

Massimo raccomandato 0,3mm

Tecnologia a getto d'inchiostro

Utilizza teste di stampa di nuova generazione da 1440 dpi (8 file da 180 ugelli) con tecnologia piezo drop-on-demand a goccia variabile. Ogni colore della ValueJet 1614 CMYK è controllato da due file di ugelli. Dimensione delle gocce: 3,5pl – 21pl. Consumo di inchiostro: media di 8 ml/m² su PVC non laminato.

Risoluzioni / Modalità di stampa

1440 x 1440 dpi, 1440 x 720 dpi, 720 x 720 dpi, 540x720 dpi / 12 modalità di stampa predefinite

Include la tecnologia i²: l'inchiostro è depositato in forme ondulate attentamente ottimizzate. La stampa con la tecnologia i² consente di risparmiare tempo e fatica e di ottenere risultati eccezionali.

Inchiostro

La ValueJet 1614 utilizza cartucce di inchiostro Eco-Solvent Ultra da 220 e 440ml. Gli inchiostri Mutoh Eco Ultra sono prodotti con solventi non aggressivi. Non necessita di ventilazione forzata. L'inchiostro può essere utilizzato per grafica su PVC economico, banner e materiali morbidi, e su materiali laminati. Le stampe sono resistenti all'acqua e ai raggi UV fino a 3 anni in esterno.

Prestazioni

Velocità standard di stampa su PVC adesivo non laminato (vinile): fino a 8,6m²/h

Velocità di stampa su banner e tessuti morbidi: fino a 15 m²/h

Velocità massima: 18,2 m²/h

* Tutte le velocità indicate sono per 720x720 dpi. Le velocità indicate sono misurazioni in tempo reale per impostazioni di stampa con larghezza di stampa di 1615mm.

Trascinamento del materiale

Supporta materiali in fogli e in rotolo – un portarotolo per la carta è compreso (compatibile con rotoli con anima da 2" e 3") –

Diametro del rotolo di materiale: 150mm

Avvolgitori / svolgitori opzionali:



Sistema di tensione e avvolgimento automatico per carico massimo di 30kg



Avvolgitore / svolgitore con meccanismo di tensione per carico massimo di 100kg

Asciugatura del materiale

La ValueJet 1604 include tre elementi asciugatori per l'acclimatamento del materiale, la fissazione dell'inchiostro e l'asciugatura della stampa.

Gli elementi asciugatori si possono gestire separatamente (30-50°C)

Connessione di rete

TCP/IP – Ethernet 100 base-TX / 10 Base-T

Condizioni ambientali

Temperatura: raccomandata 20°C – 30°C con Δt massimo 2°C

Umidità relativa: 40% - 60% (senza condensazione) con ΔRH massimo 5% RH/h

Dimensioni

Dimensioni (escluso avvolgitore): (Lungh. x Largh. x Alt.) 2698x845x1600 mm / peso 182kg

© Mutoh Europe N.V. October 2008. Specifications subject to change without notice. The machines depicted on this brochure do not necessarily show a standard configuration. For further info, contact your nearest Mutoh authorized reseller. All trademarks mentioned are property of their respective owners.

MUTOH

MUTOH EUROPE N.V.
Tel.: 32-(0)59-56 14 00
Fax: 32-(0)59-80 71 17
E-mail: mutoh@mutoh.be
<http://www.mutoh.be>
<http://www.mutoh.eu>

MUTOH Deutschland GmbH
Tel.: 49-211-385474-0
Fax: 49-211-385474-74
E-mail: Mutoh-Sales@t-online.de
<http://www.mutoh.de>

Distributed by:



REPRO s.r.l.

Via C. Battisti, 41/43
35010 LIMENA (PD)
tel. 049 88 40 272
fax. 049 88 40 278
<http://www.reproweb.it>

Ref. LITP00861 - 10/08

MUTOH

ValueJet

VJ-1638W

Mutoh ValueJet 1638W High Speed Dye Sublimation Printer



Transfer sublimation printing up to 1625 mm (63.97")

Staggered dual head setup with latest generation 1440 nozzle piezo heads

Production speeds between 42 & 65 m²/h

Mutoh water-based disperse dye inks

Ideal for production of soft signage, sportswear, gadgets, ...

Environmentally friendly printing - high level of operator safety



Maximum Media / Print Width / Thickness / Roll Diameter

Max. Media Width : 1625 mm (63.97") / Max. Print Width : 1615 mm (63.58")

Media Thickness : Head low: 0.3 mm / Head middle: 1.3 mm / Head high: 2.8 mm

Roll Diameter: max. Ø 150 mm

Application Possibilities

Transfer onto all possible flexible and rigid polyester materials:

- Soft signage & graphics for events, tradeshow, ...
- Home decoration : curtains, bed linen, ...
- Flags & pennants
- Sports goods : snowboards, helmets, ...
- Gadgets : mugs, umbrellas, iPods, mouse mats, ...
- Apparel : blouses, sportswear, outdoor jackets, T-shirts, ...

Inkjet Technology

Staggered dual head setup with latest generation 1440 nozzle piezo heads (360 nozzles / head - two 180 nozzle rows per colour) – Drop mass range: 3.3 – 37.4 pl

Drop-on-demand micro piezo inkjet heads with dynamic variable dot imaging technology.

Mutoh's award-winning Intelligent Interweaving print technology (i²) inside.

Print Resolutions / Speed Levels

360 x 360, 360 x 720, 540 x 720, 720 x 720, 720 x 1080, 1440 x 720 & 1440 x 1440 dpi

Production speed range : 10 m²/h – 65 m²/h

Typical production speeds up to 42 m²/h (360 x 720 dpi) / up to 65 m²/h (360 x 360 dpi)

Ink & Media

Transfer sublimation printing with Mutoh's high speed water based disperse dye inks - 1 & 5 litre bottles – C, M, Y, K
Excellent colour gamut, nozzle stability & fast drying -> high speed & high volume printing

Print on all typical dye sublimation transfer papers from 66 g/m² to 150 g/m²

Automatic sheet-off after printing. Manual cutting possible in the dedicated cutting groove on the media guide.

Configuration Options

- Different winding/unwinding systems available.
- Optional bulk ink system
- Mutoh's UniFixer 65 calender will heat transfer your dye sublimation prints from paper to fabric.



© Mutoh Belgium nv – March 2012. Specifications are subject to change without notice. The machine depicted on this brochure does not necessarily show a standard configuration. For further info, please contact your nearest Mutoh authorised reseller. All trademarks mentioned are property of their respective owners. Image in the printer copyrighted by Mutoh Belgium.

MUTOH

MUTOH Belgium nv
E-mail: mutoh@mutoh.be
<http://www.mutoh.eu>

MUTOH Deutschland GmbH
E-mail: vertrieb@mutoh-gmbh.de
<http://www.mutoh.de>

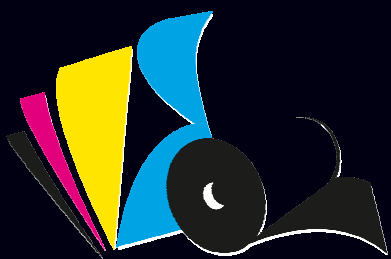
MUTOH North Europe
E-mail: info@mutohnorth.eu
<http://www.mutohnorth.eu>

Distributed by:



REPRO s.r.l.

Via C. Battisti, 41/43
35010 LIMENA (PD)
tel. 049 88 40 272
fax. 049 88 40 278
<http://www.reproweb.it>



Repro



Built to perform



MUTOH

GRANDE FORMATO

BIO LACTITE



ValueJet VJ-1617H



A versatile high definition printer

Meet the VJ-1617H, Mutoh's first Sign & Display printer equipped with white inks. The ValueJet 1617H hybrid printer delivers high quality prints on a wide variety of roll and rigid media, such as uncoated polyester, PP, PE, ABS, PET, non-pvc self-adhesive media, uncoated Tyvek, cardboard, recyclable fibre-based paper, PVC foam board, aluminium sandwich board, ...

The ValueJet 1617H utilises Mutoh's MP11 Multi-Purpose inks, offering print compatibility with a unique range of substrates. The MP11 CMYK + White inks are non-petrochemical based. The key carrier, comprising 50 % of the ink, is derived from corn.

An ideal fit for print providers who supply customers demanding "green output" (recyclable media).

Product Highlights

- 64" (1625 mm) rigid and roll-to-roll printing
- CMYK + White renewable resource inks
- White ink circulation pump to prevent pigment sedimentation
- Prints on a wide range of uncoated substrates
- Extensive colour gamut and excellent image durability
- Reliable high quality printing with Mutoh's i² Intelligent Interweaving print technology

Application Possibilities

Mutoh's ValueJet Hybrid roll-to-roll & rigid digital inkjet printer is the ideal partner for start-up companies as well as established print businesses wanting short run production of roll prints and panel creation for close viewing distances. It is the versatile, economic option that reduces impact on the environment.





ValueJet VJ-1617H



Rigid & Roll-to-roll Printer

SPECIFICATIONS

Technical Key Specifications

Print Technology	Drop-on-demand Micro Piezo Inkjet Technology
Print Head	1
Nozzle Configuration	180 nozzles x 8 lines
Drop Mass Range (pl)	3.6 to 15.5
Head Height	Automatic *

* : Media thickness is measured electronically and head height is adjusted automatically

Roll Media Specifications

Min./Max. Media Width	182 mm (7.17") / 1625 mm (63.97")
Max. Print Width	1615 mm (63.58")
Max. Media Thickness	15 mm
Media Measurements *	Roll: Ø 150 mm / 2" & 3" / 30 kg

* : Standard non-motorised roll-off system

Media Drying System	Full width 64" air knife Temperature range: 65° - 75° - 85° C (air temp.) Typical media surface temperature: 50 °C or lower
---------------------	---

Rigid Media Specifications

Min./Max. Media Width	182 mm (7.17") / 1625 mm (63.97")
Max. Print Width	1615 mm (63.58")
Max. Media Length	1200 mm (47.24")
Max. Media Thickness	15 mm
Max. Media Weight	15 kg
Media Drying System	Full width 64" air knife Temperature range: 65° - 75° - 85° C (air temp.) Typical media surface temperature: 50 °C or lower

Ink Specifications

Ink Type	MP11 Multi-Purpose inks
Ink Colours / Volume	950 ml (CMYK) / 500 ml (White)
Ink Setup	CCMMYK+cleaning / CMYK+white+cleaning
Ink Consumption *	8 ml / m ²

* : Average ink consumption at @ 720 dpi - coverage of 67 %

UV durability CMYK - without lamination Up to 3 years outdoor *

* : In case mechanical stress is involved, protection (lamination ...) is required.
Stabilisation is required prior to lamination.

Performance		4-colour setup		5-colour setup	
		2 x CMYK	CMYK only	White only	CMYK+White
720 x 1080	HQ	3.4 m ² /h	1.75 m ² /h	2.9 m ² /h	0.3 m ² /h
720 x 1080	Q	6.8 m ² /h	3.5 m ² /h	6.0 m ² /h	0.9 m ² /h
720 x 720	HQ	4.3 m ² /h	2.25 m ² /h	4.4 m ² /h	0.6 m ² /h
720 x 720	Q	8.7 m ² /h	4.5 m ² /h	8.8 m ² /h	1.5 m ² /h
720 x 540	HQ	6.5 m ² /h	3.2 m ² /h	2.9 m ² /h	0.9 m ² /h
720 x 540	Q	10 m ² /h	6.5 m ² /h	5.8 m ² /h	2.1 m ² /h

Power Consumption

During Printing	2100 W (2 sockets)
In Stand-by	65 W
Warming Up	2440 W (2 sockets)
Power Supply	AC 100-120 V / AC 200-240 - 60/50 Hz

Recommended Working Environment

Temperature	20 °C - 28 °C with Δt: max. 2 °C/h
Humidity	40 % - 60 % (no condensation) with ΔRH: max. 5 % RH/h

Machine Measurements

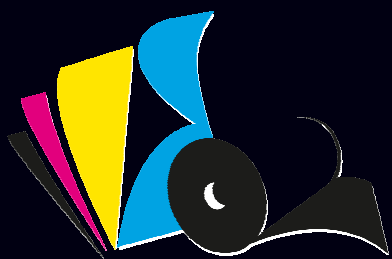
Width x Depth x Height	2698 x 818 x 1302 mm (roll)
Width x Depth x Height	2698 x 2486 x 1302 mm (rigid)
Weight	234.5 kg (roll) - 319.5 kg (rigid)

Distributed by:



REPRO s.r.l.

Via C. Battisti, 41/43
35010 LIMENA (PD)
tel. 049 88 40 272
fax. 049 88 40 278
<http://www.reproweb.it>



Repro



Built to perform



MUTOH

GRANDE FORMATO

SOLVENTE

Wide format production solvent printer



- > 192 cm (75.5") six colour solvent inkjet printer
- > Production speeds up to 40 m²/h
- > Prints true 360 dpi quality onto uncoated materials
- > Fast turnaround & superior output quality
- > 5 head heights up to 4.5 mm for multiple media compatibility
- > For long-term heavy-duty outdoor applications



Osprey 1.9 m drop-on-demand solvent inkjet printer

Maximum Media Width : 1920 mm (75.59")

Maximum Print Width : 1870 mm (73.6")

Technology

Drop-on-demand piezo solvent inkjet technology

Incorporates six 256 nozzle industrial-strength Spectra® print heads, especially developed for true solvent ink applications / one year head warranty

Ink – Durability

High-speed solvent-based double density inks – 6 colour channels (C, M, Y, K, Lc, Lm)

2000 ml ink bottles, refillable on-the-fly, allowing large autonomy and unattended printing

Prints are water, highly abrasion and UV-resistant for up to 5 years outdoor, without lamination

Performance

Output resolutions : 360 x 360 dpi, 360 x 720 dpi(**), 360 x 180 dpi(*)

Speed levels (m²/h) : 80.3(*)(**), 40.1 , 20.1, 10.4 and 5.2 (**)

Quality Levels : draft, production, quality, high quality, high density(**)

(*) 360 x 180 dpi low resolution modes and 80.3 m²/h top engine speed are available on the printer. Applicability of these modes needs to be judged on an individual basis and can only be used in combination with Mutoh PJ4 high speed double density inks. All speeds indicated are for the maximum output width.

(**) High density addressable 360 x 720 dpi at reduced speed is an excellent tool to print onto substrates requiring very high ink loads.

(**) Top engine speeds can only be used in combination with Mutoh PJ4 high speed double density inks.

Media Handling / Compatibility

Adjustable head height : 2.5 mm up to 4.5 mm, in 0.5 mm steps

Incorporates motorized and sensorised heavy-duty unwinding and winding system for media rolls up to 140 kg for unattended printing

Coated pressure rollers with variable down-pressure (media thickness up to 1 mm)

Options

- APS Quatro 4-stage Air Purification System : will take care of unpleasant smells and will bring the solvent levels in the working area far below the accepted safety levels

- Mutoh's Infrared Dryer for Osprey 75 (*):

- Size : 1835 mm / 72"

- Volts : 220 V / Amps : 5.2 A / Power : 1150 W

(*) The optional infrared dryer is an excellent tool to appropriately finish your output.

- For Osprey 75, you will need the IR dryer for output speeds of 40 m²/h or higher using Mutoh's PJ4 high speed double density ink.

- In any output mode, the IR dryer helps to avoid stickiness of wound up prints and helps most solvents to evaporate before the print reaches the take-up system. This drastically reduces the media manufacturers' recommended dry out times (**)

(**) The dry out time is the time media manufacturers recommend you to expose rolled open self-adhesive PVC output to open air before final application.



Machine Dimensions - Weight

W x D x H : 3096 mm x 940 mm x 1324 mm – 400 kg

Copyright Mutoh Europe nv, February 2006. All specifications and machine configurations subject to change without notice. All trademarks mentioned are property of their respective owners.



MUTOH EUROPE N.V.
Tel.: 32-(0)59-56 14 00
Fax: 32-(0)59-80 71 17
E-mail: mutoh@mutoh.be
<http://www.mutoh.be>

MUTOH Deutschland GmbH
Tel.: 49-(0)2159 91 34 30
Fax: 49-(0)2159 91 34 56
E-mail: Mutoh-Sales@t-online.de

MUTOH Industries Ltd.
Tel.: 81-(0)3-54 86 71 44
Fax: 81-(0)3-54 86 71 63

Distributed by:



REPRO s.r.l.
Via C. Battisti, 41/43
35010 LIMENA (PD)
tel. 049 88 40 272
fax. 049 88 40 278
<http://www.reproweb.it>

Ref. LITP0067E - 02/06

Wide format production solvent printer



- > 260 cm (102") six colour solvent inkjet printer
- > Production speeds up to 45 m²/h
- > Prints true 360 dpi quality output onto uncoated materials
- > Fast turnaround & superior output quality
- > 5 head heights up to 4.5 mm for multiple media compatibility



> PRODUCTION SOLVENT INKJET PRINTER

Meet Mutoh's third generation solvent-based inkjet printer, the Osprey. The Osprey is a 2600 mm (102") wide 6 colour solvent-based high volume printer specifically developed for long-term outdoor graphics. The Osprey combines everything you can possibly expect from a high-end volume oriented solvent production printer : Spectra® industrial strength inkjet heads, bulk ink

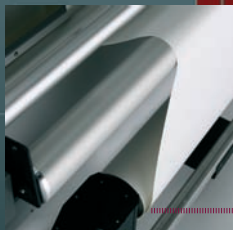
supply (2 litre bottles), optimal runability (easy operation and minimal daily maintenance), incorporated heating elements for media conditioning and drying, adjustable head height, and last but not least a motorized unwinding/winding system for unattended printing. Typical production speeds of up to 45 m²/hour on standard available uncoated vinyl and banner can be reached. The Osprey will allow you to tackle practically any outdoor job : point of purchase displays, banners, signage, exhibition graphics, long-term backlit displays, vehicle graphics, street furniture, taxi & bus wraps, wall murals, seasonal and long-term corporate graphics, floorgraphics,



**Large Ink Containers,
Refillable on the Fly**



**Wide Media
Acceptance**



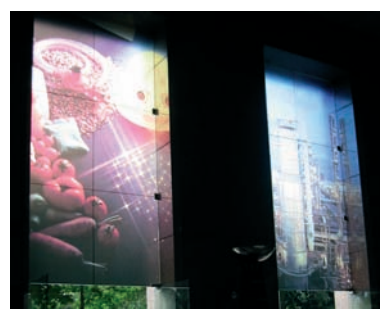
**Unwinder / Winder
System for Unattended
Printing**



**User & Maintenance
Friendly**

Osprey High Speed Double Density Inks

The high speed solvent-based double density Osprey inks (C, M, Y, K, Lc, Lm) offer the possibility to print directly onto standard uncoated PVC and banner materials and moreover reduce drying time considerably, resulting in higher printing speeds. Delivered in 3.25 liter bottles per colour, Osprey inks offer a wide colour gamut and will make your prints look brilliant and brighter than ever before.



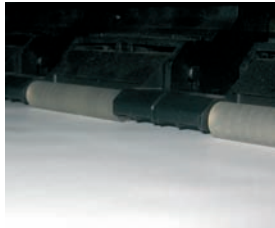
Maintenance-friendly

No special cleaning cycles are involved. Powering off the printer is done in a minute : wet a sponge per print head, put it in the capping station and just close the capping station. As a result, ink can stay overnight in the print heads. Moreover, the next morning your Osprey is immediately ready for volume printing.



Media Versatility

The incorporated RIP controlled head height adjustment feature (regulable in 0.5 mm steps from 2.5 up to 4.5 mm) allows multiple media compatibility. Coated pressure rollers with variable down-pressure, allow loading of a wide range of uncoated PVC and banner materials (thickness up to 1 mm).



High-End Head Technology

The Osprey incorporates six 256 nozzle Spectra® industrial strength print heads, specifically developed for true solvent-based ink applications. Thanks to the incorporated proven drop-on-demand inkjet head technology, combined with the use of specifically developed solvent inks, Osprey printers create high quality outdoor durable outputs.



Media Acclimatisation

The Osprey has two incorporated heating elements, one for media acclimatisation before printing and the other one for post-conditioning of prints, making it possible to reach higher printing speeds and allowing efficient drying and high print quality.



Unattended Printing

The incorporated fully motorised heavy-duty media unwinding/winding system, capable of handling loads up to 140 kg, allows unattended printing and makes sure the Osprey is ready to handle volume production.



Durable Outdoor Prints

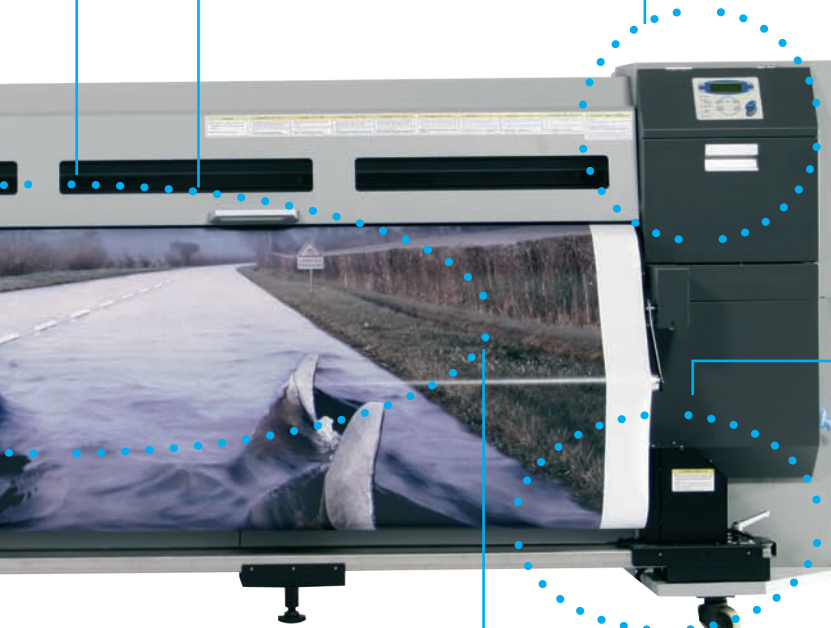
Because Osprey inks are waterproof and highly abrasion and UV-resistant, printed images can last outdoors for up to 5 years*, without lamination**, even on low cost materials.

* : Based on accelerated weather tests. Northern European Standards.

** : For heavy-duty applications where mechanical stress is involved (floor & vehicle graphics), media manufacturers will always recommend lamination. Prior to lamination, stabilisation time is required.

Bulk Ink System

Inks are stored in six 2000 ml bulk ink bottles, allowing long autonomy and unattended printing. The bottles are stored in the Osprey's extendable ink tray system which is fully integrated inside the machine's body. This will allow the user to refill bottles neatly and conveniently, even whilst printing.





> Specifications:



Maximum Media / Print Width

Osprey 102":

Maximum Media Width : 2600 (102.36")

Maximum Print Width : 2500 (98.43")

Inkjet Technology

Incorporates six 256 nozzle industrial strength Spectra® print heads, especially developed for true solvent-based ink applications.

Drop-on-demand piezo solvent inkjet technology. One year head warranty

Ink - Durability

High speed solvent-based double density inks – 6 colour channels (C, M, Y, Lc & Lm)

2000 ml ink bottles refillable on-the-fly, allowing large autonomy and unattended printing.

Prints are water, highly abrasion and UV-resistant for up to 5 years outdoor, without lamination.

Application Possibilities

Prepared for demanding volume users.

Outdoor durable graphics.

Performance

(High) Quality output* (360 dpi, 2 pass)	11,5 m²/h - 22,5 m²/h
Commercial production prints (360 dpi, 1 pass)	45 m²/h
Draft speed mode (180 dpi, 1 pass bi-directional) **	90 m²/h

* : The Osprey also supports an electronically addressable 720 dpi high density mode, an excellent tool to print onto substrates requiring abnormally high ink loads (5.9 m²/h).

** : 180 dpi low resolution modes and 90 m²/h top engine speed are available on the printer.
Applicability of these modes needs to be judged on an individual basis.

Environmental Conditions

Temperature: 20° C – 30° C / Relative Humidity (no condensation): 35 % to 60 %

Dimensions

L x W x H : 3775 x 940 x 1325 mm - Weight : 450 kg

Standard included

- Ink starter set incl. 6 x 3.25 l high speed, double density quick dry ink (1 bottle per colour: C, M, Y, K, Lc, Lm)
- Professional PostScript RIP software (Mutoh Edition of Onyx RIPCenter Pro or Scanvec Amiable PhotoPRINT Server)
- Media tube for roll-up system
- Hard disk 20.3 GB (not pre-mounted)
- Network card (pre-mounted)
- User's guide
- Accessory kit:
 - Accessory box, power cable, foot switch, media holder plate (2), gloves (1 box), funnel, wipe cloth (1 box), print head wiper, operation panel cover, hand pump, cap sponge (6), waste liquid bottle, wash bottle, screwdriver, plastic spacer + screw, tray

Options

- Mutoh's Infra Red Dryer
- APS Quatro 4-stage Air Purification System

The APS Quatro will take care of unpleasant and annoying smells and will bring solvent levels in the working area far below accepted safety levels.

Copyright © Mutoh Europe N.V., October 2005. All specifications and machine configurations subject to change without notice.
All trademarks mentioned are property of their respective owners.



MUTOH EUROPE N.V.
Tel.: 32-(0)59-56 14 00
Fax: 32-(0)59-80 71 17
E-mail: mutoh@mutoh.be
<http://www.mutoh.be>

MUTOH Deutschland GmbH
Tel.: 49-(0)2159 91 34 30
Fax: 49-(0)2159 91 34 56
E-mail: Mutoh-Sales@t-online.de

MUTOH Industries Ltd.
Tel.: 81-(0)3-54 86 71 44
Fax: 81-(0)3-54 86 71 63

Distributed by:



REPRO s.r.l.

Via C. Battisti, 41/43
35010 LIMENA (PD)
tel. 049 88 40 272
fax. 049 88 40 278
<http://www.reproweb.it>



MUTOH

Creation, we make it happen ...



Super wide format production solvent printer



- > 3.3 meter (130") six colour solvent inkjet printer
- > Production speeds up to 45 m²/h
- > Prints true 360 dpi quality output onto uncoated materials
- > Compact design
- > Ideal for existing wide-format users looking for output exceeding 2.5 metres width



Osprey 130" drop-on-demand solvent inkjet printer

Maximum Media Width : 3300 mm (129.92")

Maximum Print Width : 3200 mm (125.98")

Inkjet Technology

Incorporates six 256 nozzle industrial strength Spectra® print heads, especially developed for true solvent-based ink applications.

Drop-on-demand piezo solvent inkjet technology. One year head warranty

Ink – Durability

High speed solvent-based double density inks – 6 colour channels (C, M, Y, K, Lc & Lm)

2000 ml ink bottles refillable on-the-fly, allowing large autonomy and unattended printing.

Prints are water, highly abrasion and UV-resistant for up to 5 years outdoor, without lamination.

Media Handling / Compatibility

Adjustable head height : 2.5 mm up to 4.5 mm, in 0.5 mm steps

Incorporates motorised and sensorised heavy-duty unwinding and winding system for media rolls up to 140 kg for unattended printing; minimum recommended media width 1000 mm.

Performance*

(High) Quality output** (360 dpi, 2 pass) 11,5 m²/h - 22,5 m²/h

Commercial production prints (360 dpi, 1 pass) 45 m²/h

Draft speed mode (180 dpi, 1 pass bi-directional) *** 90 m²/h

* : Speeds mentioned are real-time measurements, using full media width.

** : The Osprey also supports an electronically addressable 720 dpi high density mode, an excellent tool to print onto substrates requiring abnormally high ink loads.

*** : 180 dpi low resolution modes and 90 m²/h top engine speed are available on the printer. Applicability of these modes needs to be judged on an individual basis.

Environmental Conditions

Temperature: 20° C – 30° C / Relative Humidity (no condensation): 35 % to 60 %

Dimensions

L x W x H : 4560 x 940 x 1325 mm

Weight : 900 kg (stand included)

Standard included

- Ink starter set
- Media core brace set – to prevent bending of heavy media rolls
- Media tube for roll-up system
- Hard disk 20.3 GB (not pre-mounted)
- Network card (pre-mounted)
- User's guide
- Accessory kit

Options

APS Quatro 4-stage Air Purification System

The APS Quatro will take care of unpleasant and annoying smells and will bring solvent levels in the working area far below accepted safety levels.

Infra Red Dryer

Mutoh Edition Software. Different software packs developed to empower your workflow with efficient

Copyright Mutoh Europe nv, March 2008. All specifications and machine configurations subject to change without notice. All trademarks mentioned are property of their respective owners. Image courtesy of and copyrighted by Scwarzkopf Professional.

MUTOH

MUTOH EUROPE N.V.
Tel.: 32-(0)59-56 14 00
Fax: 32-(0)59-80 71 17
E-mail: mutoh@mutoh.be
<http://www.mutoh.be>
<http://www.mutoh.eu>

MUTOH Deutschland GmbH
Tel.: 49-211-385474-0
Fax: 49-211-385474-74
E-mail: Mutoh-Sales@t-online.de
<http://www.mutoh.de>

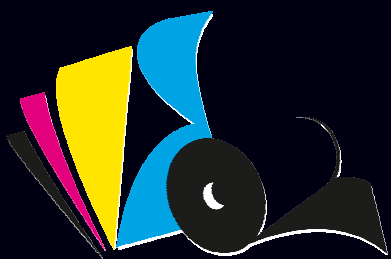
Distributed by:



REPRO s.r.l.

Via C. Battisti, 41/43
35010 LIMENA (PD)
tel. 049 88 40 272
fax. 049 88 40 278
<http://www.reproweb.it>

Ref. LITP0072E - 03/08



Repro

Built to perform



MUTOH

GRANDE FORMATO

UV



ValueJet VJ-426UF



Desktop A3+ Flatbed LED UV Printer

The ValueJet VJ-426UF is a compact A3+ flatbed 6-colour LED UV printer with integrated vacuum table. Offering a print table area of 483 mm (19") x 329 mm (13"), the VJ-426UF enables direct printing onto objects up to 70 mm thick. The printer will deliver exceptional print quality on a wide variety of solid materials and objects including ABS, Alu-board, PC, PE, PET, PMMA (acrylic), PP, PS, PVC, and glass.

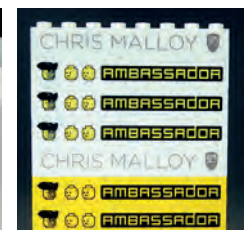
An energy-efficient latest generation LED UV lamp ensures ultra-sharp, safe & ready to use prints. Its reduced working temperatures also allow printing onto heat sensitive substrates. Compared to "classic" UV printing, Mutoh LED UV technology provides you all state-of-the-art health & safety and environmental benefits: no ozone generation, free of mercury and lead. Moreover, Mutoh's new LED UV inks and varnish are completely VOC-free and do not contain any hazardous air pollutants (non-HAP).

Product Highlights

- Compact desktop A3+ flatbed LED UV printer
- CMYK LED UV inks – optional white and varnish for a luxurious or specialty finish
- Print on a wide variety of products and their prototypes, even 3D objects
- Low energy consumption and low temperatures, ideal for heat sensitive materials
- 0% VOC – non-HAP – no outgassing of prints – no mercury – no lead
- Mutoh Intelligent Interweaving print technology (i2) - Dedicated "UV-weaving"

Application Possibilities

The multi-purpose VJ-426UF printer will produce ultra-sharp, high quality output and is specifically targeted at short run items or one-off designs of products and their prototypes, personalised gifts, packaging, souvenirs, awards, specialty industrial items as well as labels, decals, signs, etc..





ValueJet VJ-426UF



Desktop A3+ Flatbed LED UV Printer

SPECIFICATIONS

Technical Key Specifications

Print Technology	Drop-on-demand Micro Piezo Inkjet Technology
Print Head	1
Nozzle Configuration	180 nozzles x 8 lines
Drop Mass Range (pl)	3.8 to 28
LED UV lamp life	14.250 hours

Media Specifications

Size Print Table	483 mm (19") x 329 mm (12.95")
Max. Print Area	473 mm (18.62") x 319 mm (12.55")
Max. Media Thickness	Up to 70 mm (2.75")
Max. Media Weight	4 kg
Media Drying System	Long life LED UV curing lamp
Vacuum System	Standard integrated – electronically adjustable hold-down strength

Ink Specifications

Ink Type	LED-UV inks
Ink Colours / Volume	CMYK & Varnish - 220 ml cassette / 800 ml bag* White - 220 ml cassette / 500 ml bag*

* : 800 ml / 500 ml bag requires optional adapter

Ink Setup	CMYK (CCMMYK) CMYK + White + Varnish (CMYK+Wh+Va)
-----------	--

Ink Consumption *	1,6 ml / table
-------------------	----------------

* : Average ink consumption at @ 720 dpi - coverage of 67 %

Compatibility	ABS, Alu Board, Glass, PC, PE, PET, PMMA (acrylic), PP, PS, PVC, Tyvek® *
---------------	--

* : Ink adhesion will vary among media type and brand. Individual testing is required in function of your specific application

Performance

	4 Colour		6 Colour	
Print Mode	CMYK	CMYK Only	White Only	Layer Print*
Speed in tables per hour (excl. unloading/loading time) **				
1440 x 1440 Uni	6	2	6	1
720 x 1440 Uni	13	6	13	3
720 x 1080 Bi	28	14	28	7

* : CMYK + white + varnish

** : 1 Table corresponds to 0,15 m²

Power Consumption

During Printing	< 330 Watt
Power Supply	AC 100-120 V / AC 200-240 - 60/50 Hz - ≤ 4.0 A / ≤ 2.0 A

Recommended Working Environment

Temperature	20 °C - 32 °C with Δt: max. 2 °C/h
Humidity	40 % - 60 % (no condensation) with ΔRH: max. 5 % RH/h

Machine Measurements

Width x Depth x Height	1188 x 839 x 545 mm
Weight	72 kg

Distributed by:



REPRO s.r.l.

Via C. Battisti, 41/43
35010 LIMENA (PD)
tel. 049 88 40 272
fax. 049 88 40 278
<http://www.reproweb.it>



ValueJet VJ-1626UH



All-round 64" LED-UV Printer for Roll & Rigid Media

The ValueJet VJ-1626UH is Mutoh's first Specialty/Industrial wide-format LED-UV printer. 64" (165 cm) wide, the VJ-1626UH hybrid printer will deliver high quality prints on a huge variety of roll and rigid media, including ABS, Alu-board, PC, PE, PET, PMMA (acrylic), PP, PS, PVC, uncoated Tyvek® and glass. The VJ-1626UH allows printing on a wide array of clear media for graphics that stand out. With layers of varnish, you can create special gloss patterns.

An energy-efficient latest generation LED UV lamp ensures ultra-sharp, safe & ready to use prints. Its reduced working temperatures also allow printing onto heat sensitive substrates. Compared to "classic" UV printing, Mutoh LED UV technology provides you all state-of-the-art health & safety and environmental benefits: no ozone generation, free of mercury and lead. Moreover, Mutoh's new LED UV inks and varnish are completely VOC-free and do not contain any hazardous air pollutants (non-HAP).

Product Highlights

- 1625 mm (64") wide LED UV rigid & roll-to-roll printing
- C, M, Y, K LED UV inks - optional white & varnish for a luxurious or specialty finish
- Output is immediately ready to handle
- Low energy consumption and low temperatures, ideal for heat sensitive materials
- 0% VOC – non-HAP – no outgassing of prints – no mercury – no lead
- Mutoh Intelligent Interweaving print technology (i2) - Dedicated "UV-weaving"

Application Possibilities

The ValueJet VJ-1626UH will produce high quality graphics for short viewing distances such as trade show graphics, POP, customised interior decoration, small lot packaging prototypes, banners, posters, etc.





ValueJet VJ-1626UH



64" (165 cm) Wide Hybrid LED UV Printer

SPECIFICATIONS

Technical Key Specifications

Print Technology	Drop-on-demand Micro Piezo Inkjet Technology
Print Head	1
Nozzle Configuration	180 nozzles x 8 lines
Drop Mass Range (pl)	3.8 to 28
Head Height	Automatic *
* : Media thickness is measured electronically and the head height is automatically adjusted	
LED UV lamp life	14.250 hours

Roll Media Specifications

Min./Max. Media Width	182 mm (7,17") / 1625 mm (63,97")
Max. Print Width	1615 mm (63,58")
Max. Media Thickness	15 mm
Media Measurements *	Roll: Ø 150 mm / 2" & 3" / 30 kg
* : Standard non-motorised roll-off system	
Ink Drying System	Long life LED UV curing lamp

Rigid Media Specifications

Min./Max. Media Width	182 mm (7,17") / 1625 mm (63,97")
Max. Print Width	1615 mm (63,58")
Max. Media Length	1200 mm (47,24")
Max. Media Thickness	15 mm
Max. Media Weight	15 kg
Ink Drying System	Long life LED UV curing lamp

Ink Specifications

Ink Type	LED-UV inks
Ink Colours / Volume	CMYK + Varnish 220 ml / 800 ml White 220 ml / 500 ml
Ink Setup	CMYK (CCMMYK) CMYK + White + Varnish (CMYK+Wh+Va)
Compatibility	ABS, Alu Board, glass, PC, PE, PET, PES, PMMA (acrylic), PP, PS, PVC, Tyvek® *

* : Ink adhesion will vary among media type and brand. Individual testing is required in function of your specific application.

Speed Performance in m²/h

	4 Colour	6 Colour		
Print Mode	CMYK	CMYK Only	White Only	Layer Print*
1440 x 1440 Uni	1,34	0,56	1,34	0,38
1440 x 1440 Bi	2,43	1,03	2,43	0,69
720 x 1440 Uni	2,70	1,27	2,70	0,73
720 x 1440 Bi	4,88	2,31	4,88	1,33
720 x 1080 Bi	6,45	3,28	6,45	1,67
720 x 720 Bi	9,50	4,88	9,50	2,65

* : CMYK + white + varnish

Power Consumption

During Printing	< 318 Watt
In Stand-by	55 W
Power Supply	AC 100-120 V / AC 200-240 - 60/50 Hz - ≤ 4.0 A / ≤ 2.0 A

Recommended Working Environment

Temperature	20 °C - 32 °C with Δt: max. 2 °C/h
Humidity	40 % - 60 % (no condensation) with ΔRH: max. 5 % RH/h

Machine Measurements

Width x Depth x Height	2698 x 818 x 1261 mm (roll)
Width x Depth x Height	2698 x 2730 x 1261 mm (rigid)
Weight	202 kg (roll) - 288 kg (rigid)

Distributed by:



REPRO s.r.l.

Via C. Battisti, 41/43
35010 LIMENA (PD)
tel. 049 88 40 272
fax. 049 88 40 278
<http://www.reproweb.it>